

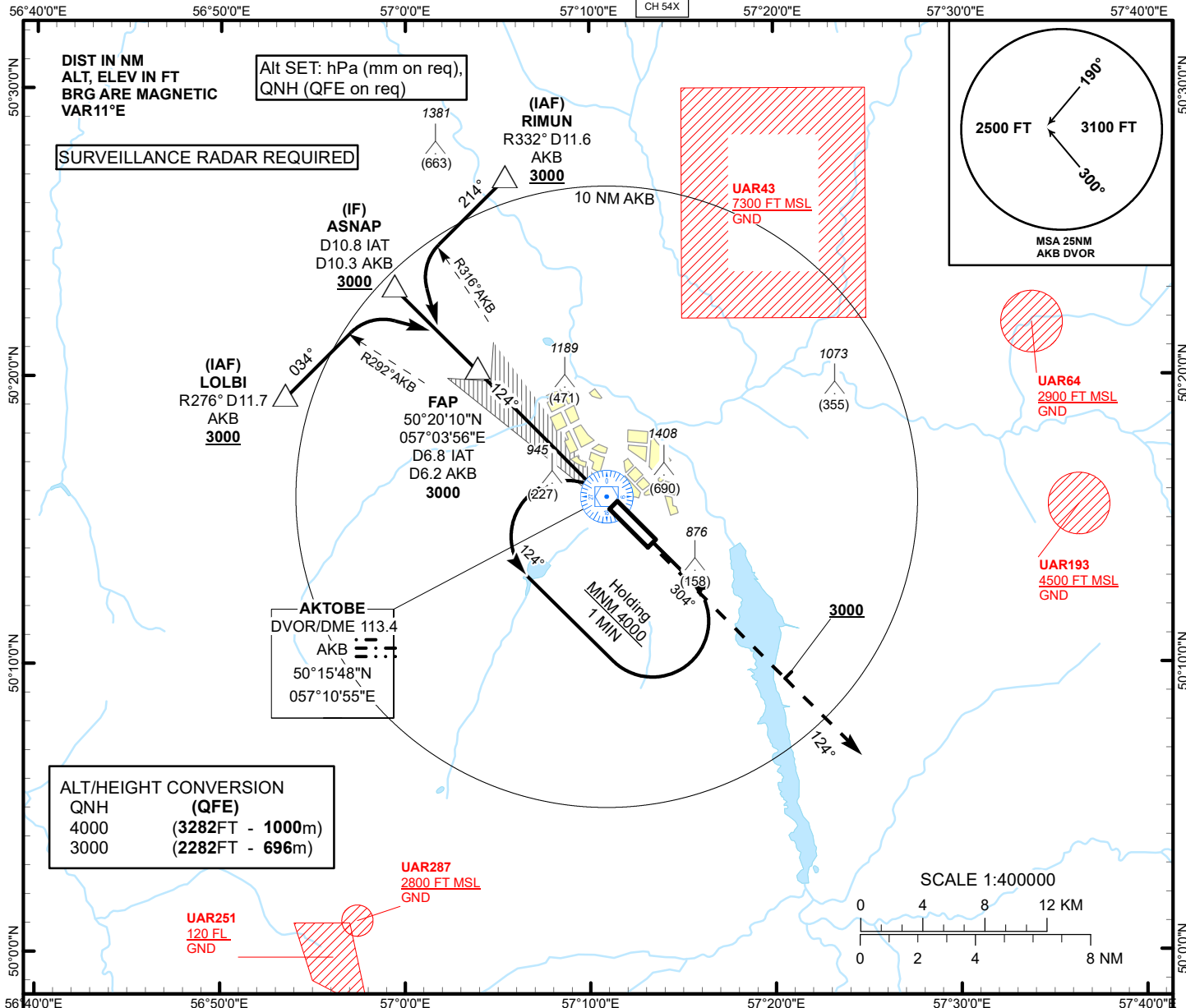
INSTRUMENT  
APPROACH  
CHART - ICAO

AERODROME ELEV 741 FT  
HEIGHTS RELATED TO  
THR 12 ELEV 718 FT

ILS  
LLZ 111.7  
IAT  
GP 333.5  
CH 54X

AKTOBE TOWER 120.90  
AKTOBE ATIS (EN) 126.0  
AKTOBE ATIS (RU) 127.80

AKTOBE  
ILS/DME  
RWY 12



IF  
ASAP  
D10.8 IAT  
D10.3 AKB  
3000

FAP  
D6.8 IAT  
D6.2 AKB  
3000

TRANSITION ALT  
10000

MISSED APPROACH  
Climb on track 124° to 3000.  
After passing 2000 radar  
vectoring will be provided  
RADIO FAILURE:  
In case of RCF climb on track  
124° to 2000 or above.  
Outbound to D6.6 NM AKB,  
turn RIGHT to AKB. Climb to 4000,  
and join to holding pattern.

DVOR/DME  
AKB

GP 3.0°  
124°

ELEV 718  
THR RWY 12

ILS RDH 53

Aircraft Category		A	B	C	D	THR - DME IAT	6.8	6	5	4	3	2	1
Straight-in Approach OCA/H						DME AKB	6.2	5.5	4.5	3.5	2.5	1.5	0.5
	CAT I	942(223)	942(223)	942(223)	942(223)	ALTITUDE	3000	2713	2385	2058	1734	1411	1090
						HEIGHT	(2282)	(1995)	(1667)	(1340)	(1016)	(693)	(372)

DME IAT ZERO RANGED TO THR RWY 12

Aerodrome Operating Minima DH ft x RVR(CMV)	CAT I				

GS	Kt	80	100	120	140	160	180
Rate of descent	ft/min	420	530	630	740	840	950

AKTOBE (UATT)  
ILS/DME RWY12

AERONAUTICAL DATA TABULATION

ILS approach to RWY12 from AKB DVOR/DME, LOLBI, RIMUN, ASNAP	
Fix/point	Coordinates
AKB DVOR/DME	50° 15' 48.3"N 057° 10' 54.8"E
LOLBI R276°, D11.7 AKB (IAF)	50° 19' 13.1"N 056° 53' 28.5"E
RIMUN R332°, D11.6 AKB (IAF)	50° 26' 51.3"N 057° 05' 24.1"E
ASNAP D10.8 IAT, D10.3 AKB (IF)	50° 23' 02.3"N 056° 59' 25.8"E
D6.8 IAT, D6.2 AKB (FAP)	50° 20' 09.6"N 057° 03' 56.0"E
THR RWY12	50° 15' 23.08"N 057° 11' 22.49"E
IAT LLZ	50° 13' 49.3"N 057° 13' 47.9"E